

Installing Network License Server for GeoData Sentry

Part 1: Install GeoData Sentry on Your Computer

Download the latest version of GeoData Random Sampler from the Laurel Hill website:

www.lhgis.com/productsdownload

Unzip the installation zip file to a system folder, and then with Windows Explorer, double-click the setup.exe installation file

Follow the installation instructions in the installation wizard.

GeoData Sentry requires Microsoft .NET Framework Version 3.5 Redistributable Package (x86). The installer will not install this software if it is not currently installed.

To download this required package from the Microsoft website go to:

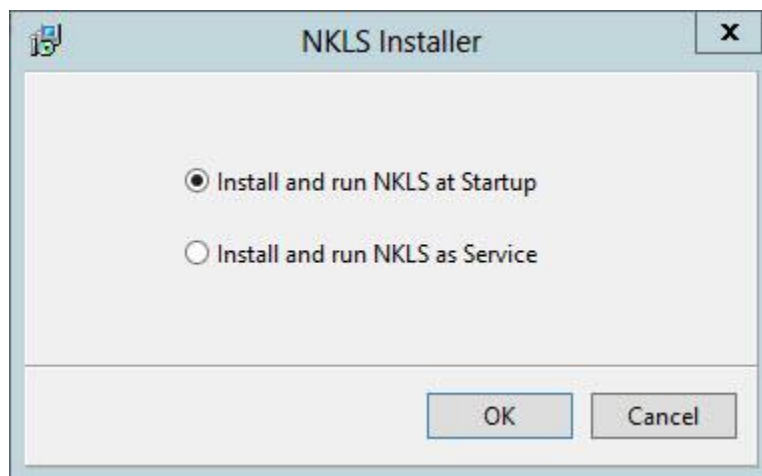
<http://www.microsoft.com/download/en/details.aspx?id=21>

Read the GeoData Random Sampler license agreement and click, Yes to accept the terms.

Once the installation has completed, a screen will display informing you that the installation is complete.

Part 2: Install NetKey License Server

To install the network license server, download the NetKey License Server (NetKeyLicenseServer.zip) installer from the Laurel Hill Web site. Run the installer. When you launch the program



The license server must be installed on a computer that is accessible by the client computers through the TCP/IP address. The NetKey License Server service name is NetKey40EK.

From the Notifications Area, double click on the NetKey License Server Icon. The NetKey License Server form will display. At this point there is nothing in the Server address and Host form inputs. Port 1245 is set as the default.



Laurel Hill GIS

Geodatabase Integrity SolutionsSM

NetKey License Server

Server Process Tools Help

Connect Disconnect Properties History

Server

Address: Port:

Host:

License

User Count: Max User:

Network Boundary:

Exec-Count: Max-Exec:

Day-Count: Max-Day:

Expire-Date:

Activity

Status: Duration:

Sent: Received:

Queue: Connections:

Processes

User	Computer	Address	Type	Connected Time
------	----------	---------	------	----------------

Rec: 0 of 0 Queue: 0 Connections: 0

NetKey License Server



By default, port 1245 is set. You may change this if it conflicts with a current service running on port 1245. To change the port number, click on Server>Properties and the Server properties form will display. You can modify the port number and add an optional caption.

Click Apply to save the settings.

Part 3: Update Client Configuration File

For each installation of GeoData Random Sampler, there is only one configuration modification necessary. The configuration value LicenseServerAddress in the GeoData Sentry configuration file C:\Program Files\Laurel Hill GIS\GeoData Sentry\Sentry.exe.config file. Once this update is made to one of the client configuration files, the license server is updated, and all clients will see the update.

Example:

```
<!-- Configuration Values for Network Concurrent Licensing. -->
<!-- LicenseServerAddress should be the TCP/IP address of the server
running the License Manager. -->
<!-- LicenseServerPort is not required and will use the default port of
1245. -->
<add key="LicenseServerAddress" value="192.168.0.190" />
<add key="LicenseServerPort" value="1245" />
```



The screenshot shows the 'Server Properties' dialog box for 'Sentry License Manager'. The 'Main' section includes a 'Caption' field with 'Sentry License Manager', a 'Port' field with '1245', and an 'Idle Time' field with '3' minutes. Both 'Default port' and 'Default idle time' are checked. Below this are sections for 'Specify User Addresses' and 'Specify User Physical Addresses', each with input fields for IP and MAC addresses and 'Add'/'Remove' buttons. The 'NetKey Manager Authentication' section has 'User' and 'Password' fields. At the bottom are 'OK', 'Apply', and 'Cancel' buttons.

Update the config value of LicenseServerAddress with the TCP/IP address of the license server. You may also update the server port if you wish to use a port other than 1245 which is the default.

Part 4: Obtain a GeoData Random Sampler License Key

To obtain a valid license code, complete the following:



Laurel Hill GIS

Geodatabase Integrity SolutionsSM

1. Open Sentry from the desktop icon.
2. If this is the first time using the software you will be prompted with the Registration form.

GeoData Sentry

Please enter a License Key to use this application.

Registration Id: QW5VN8Q29WTW5NIF

License Key:

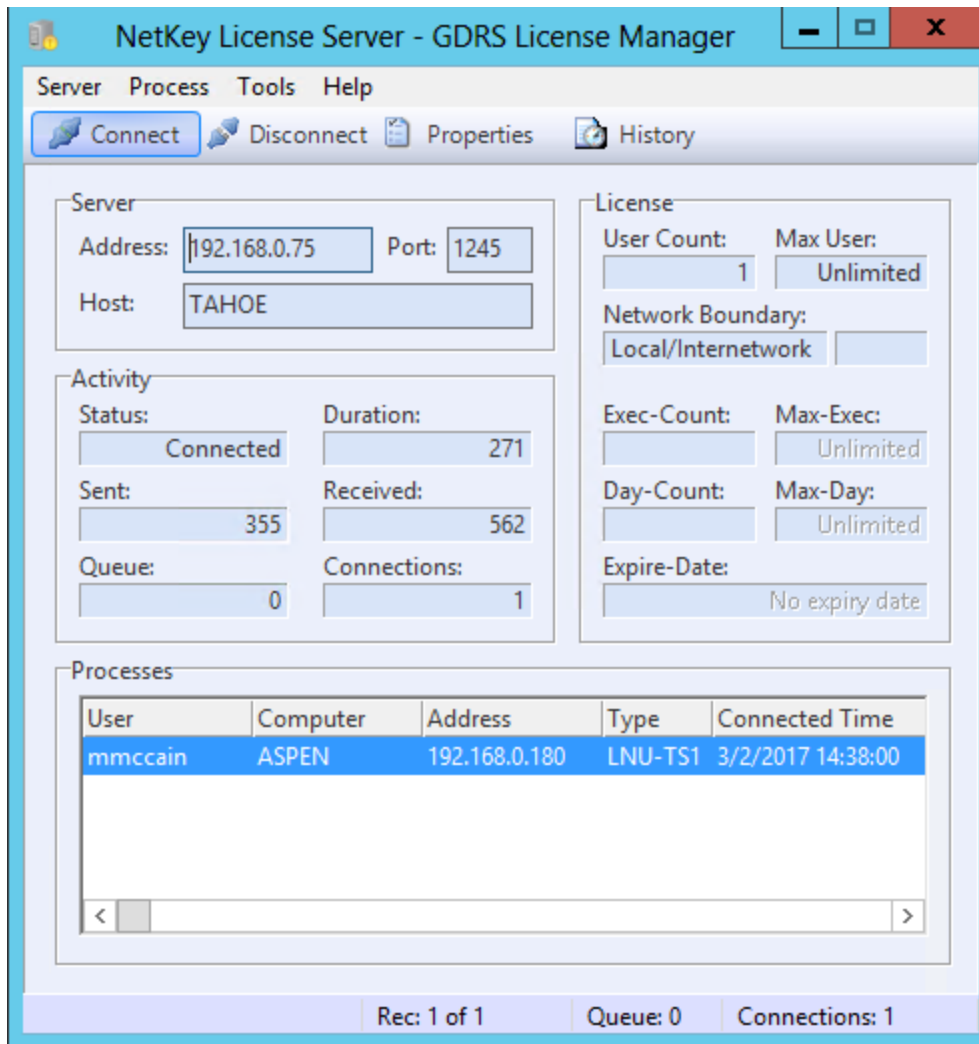
Ok Cancel

3. Email the RegistrationID to Laurel Hill GIS for the License Key.
4. Laurel Hill will send a License Key for the appropriate software you are evaluating or have purchased.
5. Copy/Paste the License Key from the email into the License Key input control and click OK.



Part 5: Managing connections

Once Sentry is configured and running, you can check the connection information on the server.



The address and host now are populated in the server frame. Each connect computer will show in the Processes frame.